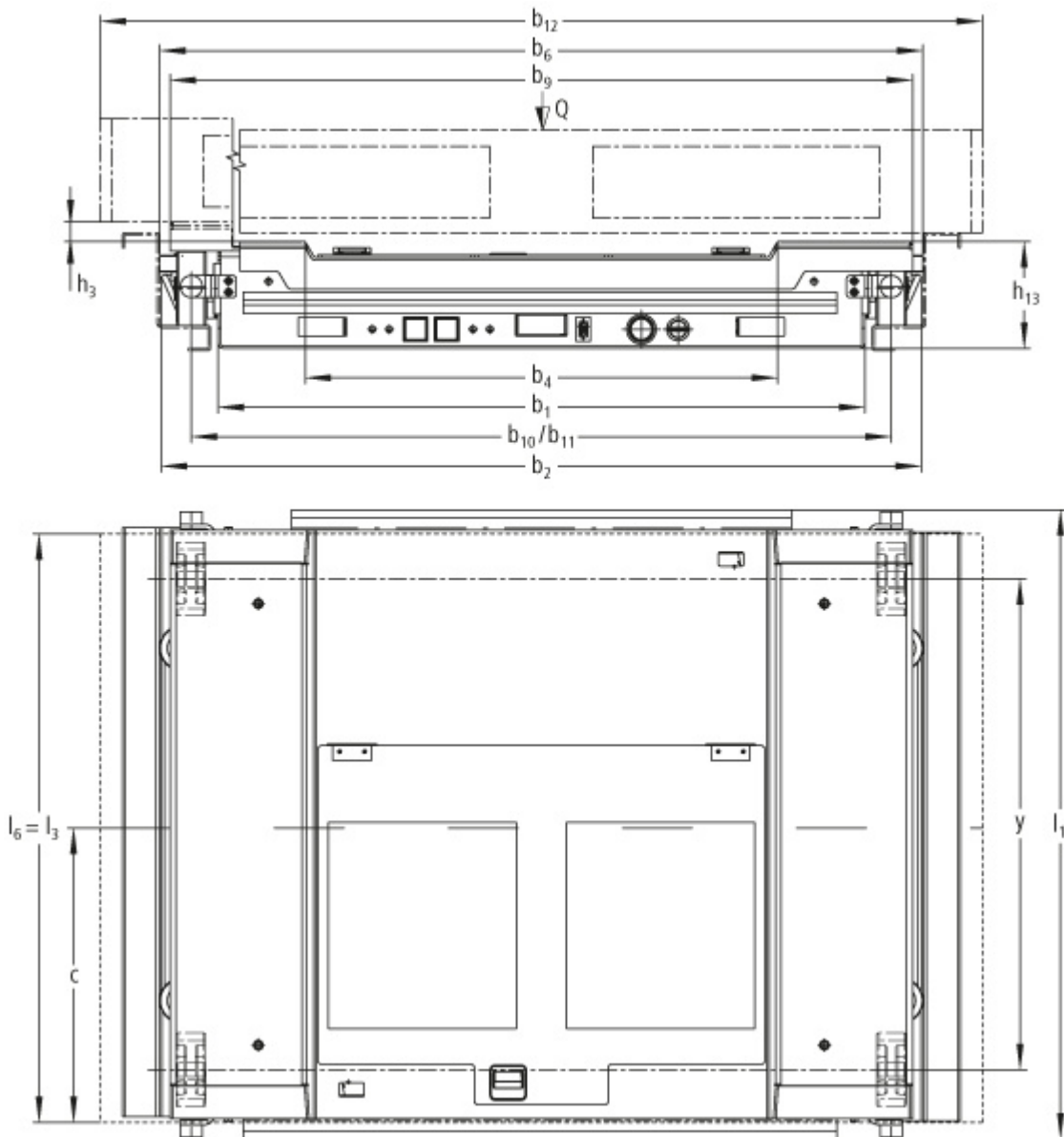


# **UPC Under Pallet Carrier**

## **UPC P1 / P2 / P4 / P5 / P6**

**Lift height: 27 mm / Capacity: 1500 kg**

# UPC P1 / P2 / P4 / P5 / P6



# VDI table

Stand-on: 12/2019

		Jungheinrich							
Characteristic	1.1	Manufacturer (abbreviated description)							
	1.2	Manufacturer's type designation	UPC P1	UPC P2	UPC P4	UPC P5	UPC P6		
Characteristic	1.3	Drive	Electric						
	1.4	Operation	Manual						
	1.5	Capacity/load	Q	kg	1.500				
	1.6	Load centre distance	c	mm	400	500	600	500	570
Characteristic	1.9	Wheelbase	y	mm	667	845	1.044	845	984
Weights	2.1.1	Service weight (incl. battery)		kg	190	212	208	212	225
	2.2	Axle load laden front/rear		kg	845 / 845	856 / 856	854 / 854	856 / 856	863 / 863
	2.3	Axle load unladen front/rear		kg	95 / 95	106 / 106	104 / 104	106 / 106	113 / 113
Wheels/suspension system	3.1	Tyres	Polyurethane						
	3.2	Tyre size, front	Ø 100 x 40						
	3.3	Tyre size, rear	Ø 100 x 40						
	3.5	Wheels, number front/back (x=driven)	2x / 2x						
	3.6	Tread width, front	b <sub>10</sub>	mm	952	782	952	842	
	3.7	Tread width, rear	b <sub>11</sub>	mm	952	782	952	842	
Basic dimensions	4.4	Lift (h <sub>3</sub> )	h <sub>3</sub>	mm	27				
	4.15	Height, lowered	h <sub>15</sub>	mm	150				
	4.16	Loading area length		mm	800	1.000	1.200	1.000	1.140
	4.18	Loading area width		mm	1.010		840	1.010	900
	4.19	Overall length	l <sub>1</sub>	mm	864	1.064	1.264	1.064	1.204
	4.21	Overall width	b <sub>1</sub> /b <sub>2</sub>	mm	880		710	880	770
	4.26	Width between support arms/loading areas	b <sub>4</sub>	mm	651		398	651	468
	4.27	Width over guide rollers		mm	1.038		868	1.038	928
	4.38.4	Pallet width		mm	1.200		1.000	1.200	1.140
	4.38.5	Pallet length		mm	800	1.000	1.200	1.000	1.140
Performance data	5.1	Travel speed laden/unladen		km/h	3.4 / 3.8				
	5.2	Lift speed laden/unladen		m/s	0.01 / 0.01				
	5.3	Lowering speed laden/unladen		m/s	0.01 / 0.01				
E-motor/ Electronics	6.1	Drive motor, performance S2 60 min		kW	0.23				
	6.2	Lift motor, performance with S3		kW	0.30				
	6.4	Battery voltage / nominal capacity		V / Ah	12 / 58				
	6.5	Battery weight		kg	46				
Miscellaneous	8.1	Type of drive control			Impulse				
	10.7	Sound level as per EN12053, operator's ear		dB (A)	62				

- In accordance with VDI Guideline 2198 this data sheet provides details of the standard truck only. Non-standard tyres, different masts, optional equipment, etc. may result in different values.

- 1.4: Rail guided in pallet channel - 5.1: Speed with load with Q = 1000 kg - 4.38.5: Model P5 can be switched; Euro pallet: c = 600 mm, l6 800 mm

The German production facilities in  
Norderstedt, Moosburg and Landsberg  
are certified.

ISO 9001  
ISO 14001

Jungheinrich fork lift trucks meet  
European safety requirements.



 **JUNGHEINRICH**

The Jungheinrich logo, featuring a red upward-pointing arrow integrated into the letter 'J', followed by the brand name 'JUNGHEINRICH' in a bold, black, sans-serif font.