

Comfortable and safe operator cabin through advanced ergonomics

Hydrodynamic drive for efficient power transfer with maintenance free laminated brakes

High performance 8 cylinder

industrial engines with high torque at low rpm

Exceptionally quiet: only 71 dB(A) in the cabin



TFG 660/670/680/690/S80/S90

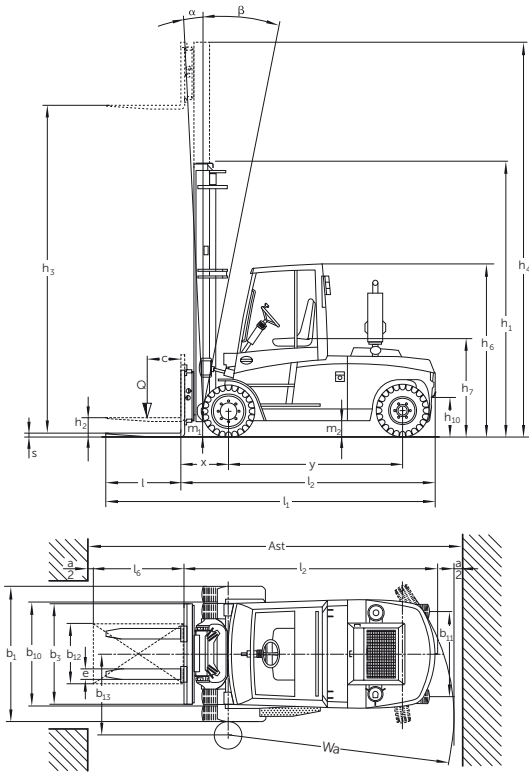
LPG fork lift with hydrodynamic drive (6000, 7000, 8000, 9000 kg)

The Jungheinrich LPG fork lift trucks with hydrodynamic drive (torque converter) offer high productivity over medium to long distance handling operations. In these situations, the advantage of the power and the drive technology can be clearly seen; smooth, judder-free operation and optimal efficiency at medium to high rpm.

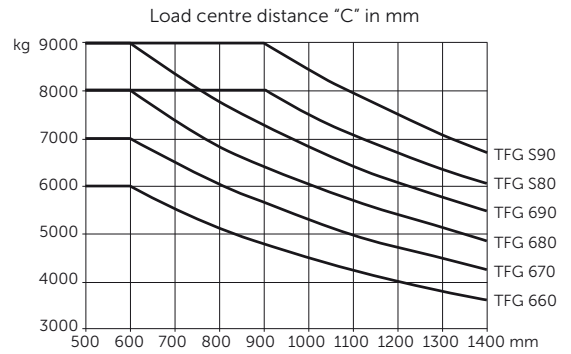
The high performance industrial engines ensure high torque at low rpm, thus increasing fuel efficiency and reducing noise. These robust engines are especially designed for applications in fork lift trucks to ensure high reliability and long life even in demanding applications. A regulated 3 way catalytic converter is available as an option.

These 6 to 9 tonne trucks are also well suited for all applications in respect to travel and operational comfort. The ergonomic arrangement of the whole cabin offers safety and comfort, protecting the health of the operator, offering the best in operational comfort whilst maintaining peak operator concentration in a relaxed manner.

TFG 660/670/680/690/S80/S90



Capacity



Designation	Lift height h_3 (mm)	Free lift h_2 (mm)	Mast table TFG 660–S90				Capacity table (kg)					
			Closed height h_1 (mm)		Extended height h_4 (mm)		Tilt forward/backward α/β (°)		c = 600 mm			
			TFG 660/670	TFG 680	TFG 660/670	TFG 680	TFG 660/670	TFG 680	TFG 660	TFG 670	TFG 680	
Two-stage mast ZT	3600	0	2710	3010	4510	4810	6/9	6/9	6000	7000	8000	
	4000	0	2910	3210	4910	5210	6/9	6/9	6000	7000	8000	
	4500	0	3160	3460	5410	5710	6/9	6/9	6000	7000	8000	
	5000	0	3410	3710	5910	6210	6/9	6/9	6000	7000	8000	
	5500	0	3660	3960	6410	6710	6/9	6/9	5500	6500	7500	
	6000	0	3910	4210	6910	7210	6/5	6/5	5500	6500	7500	
Two-stage mast ZZ	3600	1800	2875	3025	4675	4825	6/9	6/9	6000	7000	8000	
	4000	2000	3075	3225	5075	5225	6/9	6/9	6000	7000	8000	
	4500	2250	3325	3475	5675	5725	6/9	6/9	6000	7000	8000	
	5000	2500	3575	3725	6075	6225	6/9	6/9	6000	7000	8000	
	5500	2750	3825	3975	6575	6725	6/9	6/9	5500	6500	7500	
	6000	3000	4075	4225	7075	7225	6/5	6/5	5500	6500	7500	
Three-stage mast DZ	4500	1500	–	2735	–	5736	–	6/5	–	–	7720	
	5000	1667	2752	2902	6086	6236	6/5	6/5	5710	6720	7720	
	5500	1833	2918	3068	6586	6736	6/5	6/5	5210	6220	7220	
	6000	2000	3085	3235	7086	7236	2/3	2/3	5210	6220	7220	
	6500	2167	3252	3402	7586	7736	2/3	2/3	5170	6090	7090	
	7000	2333	3418	3568	8086	8236	2/3	2/3	4820	5670	6670	
Two-stage mast ZT	3600	0	TFG 690–S80	TFG S90	TFG 690–S80	TFG S90	TFG 690–S80	TFG S90	c = 600 mm	c = 900 mm		
	4000	0	3360	3510	5360	5510	6/9	6/9	TFG 690	TFG S80	TFG S90	
Two-stage mast ZZ	3600	1800	3175	3325	4975	5125	6/9	6/9	9000	8000	9000	
	4000	2000	3375	3525	5375	5525	6/9	6/9	9000	8000	9000	
	4500	2250	3625	3775	5875	6025	6/9	6/9	9000	8000	9000	
	5000	2500	3875	4025	6375	6525	6/9	6/9	9000	8000	9000	
	5500	2750	4125	4275	6875	7025	6/9	6/9	8250	7250	8250	
	6000	3000	4375	4525	7375	7525	6/5	6/5	8250	7250	8250	
Three-stage mast DZ	4500	1500	2885	3035	5886	6036	6/5	6/5	8100	7100	8100	
	5000	1667	3052	3202	6386	6536	6/5	6/5	8720	7720	8720	
	5500	1833	3218	3368	6886	7036	6/5	6/5	8720	7720	8720	
	6000	2000	3385	3535	7386	7536	2/3	2/3	7970	6970	7970	
	6500	2167	3552	3702	7886	8036	2/3	2/3	7970	6970	7970	
	7000	2333	3718	3868	8386	8536	2/3	2/3	7820	6820	7820	
Two-stage mast ZT	3600	0	3160	3310	4960	5110	6/9	6/9	9000	8000	9000	
	4000	0	3360	3510	5360	5510	6/9	6/9	9000	8000	9000	
Two-stage mast ZZ	3600	1800	3175	3325	4975	5125	6/9	6/9	9000	8000	9000	
	4000	2000	3375	3525	5375	5525	6/9	6/9	9000	8000	9000	
	4500	2250	3625	3775	5875	6025	6/9	6/9	9000	8000	9000	
	5000	2500	3875	4025	6375	6525	6/9	6/9	9000	8000	9000	
	5500	2750	4125	4275	6875	7025	6/9	6/9	8250	7250	8250	
	6000	3000	4375	4525	7375	7525	6/5	6/5	8250	7250	8250	
Three-stage mast DZ	4500	1500	2885	3035	5886	6036	6/5	6/5	8100	7100	8100	
	5000	1667	3052	3202	6386	6536	6/5	6/5	8720	7720	8720	
	5500	1833	3218	3368	6886	7036	6/5	6/5	8720	7720	8720	
	6000	2000	3385	3535	7386	7536	2/3	2/3	7970	6970	7970	
	6500	2167	3552	3702	7886	8036	2/3	2/3	7970	6970	7970	
	7000	2333	3718	3868	8386	8536	2/3	2/3	7820	6820	7820	
Two-stage mast ZT	3600	0	3160	3310	4960	5110	6/9	6/9	9000	8000	9000	
	4000	0	3360	3510	5360	5510	6/9	6/9	9000	8000	9000	
Two-stage mast ZZ	3600	1800	3175	3325	4975	5125	6/9	6/9	9000	8000	9000	
	4000	2000	3375	3525	5375	5525	6/9	6/9	9000	8000	9000	
	4500	2250	3625	3775	5875	6025	6/9	6/9	9000	8000	9000	
	5000	2500	3875	4025	6375	6525	6/9	6/9	9000	8000	9000	
	5500	2750	4125	4275	6875	7025	6/9	6/9	8250	7250	8250	
	6000	3000	4375	4525	7375	7525	6/5	6/5	8250	7250	8250	
Three-stage mast DZ	4500	1500	2885	3035	5886	6036	6/5	6/5	8100	7100	8100	
	5000	1667	3052	3202	6386	6536	6/5	6/5	8720	7720	8720	
	5500	1833	3218	3368	6886	7036	6/5	6/5	8720	7720	8720	
	6000	2000	3385	3535	7386	7536	2/3	2/3	7970	6970	7970	
	6500	2167	3552	3702	7886	8036	2/3	2/3	7970	6970	7970	
	7000	2333	3718	3868	8386	8536	2/3	2/3	7820	6820	7820	

Technical data in line with VDI 2198

as at: 12/2012

		Jungheinrich	Jungheinrich	Jungheinrich	Jungheinrich	Jungheinrich	Jungheinrich		
		TFG 660	TFG 670	TFG 680	TFG 690	TFG S80	TFG S90		
Identification	1.1	Manufacturer (abbreviation)		Jungheinrich	Jungheinrich	Jungheinrich	Jungheinrich		
	1.2	Manufacturer's type designation		TFG 660	TFG 670	TFG 680	TFG 690		
	1.3	Drive		LPG	LPG	LPG	LPG		
	1.4	Operator type		seat	seat	seat	seat		
	1.5	Load capacity / rated load	Q (t)	6	7	8	9	8	9
	1.6	Load centre distance	c (mm)	600	600	600	600	900	900
	1.8	Load distance, centre of drive axle to fork	x (mm)	670	680	690	695	700	700
	1.9	Wheelbase	y (mm)	2395	2395	2495	2645	2645	2645
	Weights	2.1	Service weight	kg	10970	11570	11900	13000	14600
2.2		Axle loading, laden front / rear	kg	14810/2160	16670/1900	17900/2000	19500/2500	20100/2500	22000/2000
2.3		Axle loading, unladen front / rear	kg	5610/5360	5910/5660	5900/6000	6000/7000	7000/7600	7200/7800
Wheels, Chassis	3.1	Tyres		SE-L	SE-L	SE-L	SE-L	SE-L	SE-L
	3.2	Tyre size, front	mm	355/65-15	8,25-15	8,25-15	300-15	300-15	300-15
	3.3	Tyre size, rear	mm	8,25-15	8,25-15	8,25-15	300-15	300-15	300-15
	3.5	Wheels, number front rear (x = driven wheels)		2x/2	4x/2	4x/2	4x/2	4x/2	4x/2
	3.6	Tread, front	b ₁₀ (mm)	1590	1520	1520	1580	1580	1580
	3.7	Tread, rear	b ₁₁ (mm)	1535	1535	1535	1495	1495	1495
	4.1	Tilt of mast / fork carriage forward/backward	α/β (°)	6/9	6/9	6/9	6/9	6/9	6/9
	4.2	Closed mast height	h ₁ (mm)	2710	2710	3010	3160	3160	3310
	4.4	Lift	h ₃ (mm)	3600	3600	3600	3600	3600	3600
	4.5	Height, mast extended	h ₄ (mm)	4510	4510	4810	4960	4960	5110
Basic Dimensions	4.7	Height of overhead guard (cabin)	h ₆ (mm)	2705	2705	2705	2705	2705	2720
	4.8	Seat height / stand height	h ₇ (mm)	1600	1600	1600	1600	1600	1600
	4.12	Coupling height	h ₁₀ (mm)	500	500	500	500	500	500
	4.19	Overall length	l ₁ (mm)	4860	4870	4980	5135	5740	5740
	4.20	Length to face of forks	l ₂ (mm)	3660	3670	3780	3935	3940	3940
	4.21	Overall width	b ₁ /b ₂ (mm)	1820/-	2002/-	2002/-	2150/-	2150/-	2150/-
	4.22	Fork dimensions	s/e/l (mm)	60/150/1200	60/150/1200	70/150/1200	70/150/1200	70/180/1800	70/180/1800
	4.23	Fork carriage ISO 2328, class / type A, B		4A	4A	4A	4A	4A	4A
	4.24	Fork-carriage width	b ₃ (mm)	1800	1800	2000	2100	2100	2100
	4.31	Ground clearance, laden, below mast	m ₁ (mm)	230	240	240	240	240	240
	4.32	Ground clearance, centre of wheelbase	m ₂ (mm)	250	250	250	250	250	250
	4.33	Aisle width for pallets 1000 x 1200 crossways	Ast (mm)	5220	5230	5440	5695	5695	5695
	4.34	Aisle width for pallets 800 x 1200 lengthways	Ast (mm)	5420	5430	5640	5895	5895	5895
	4.35	Turning radius	Wa (mm)	3350	3350	3550	3800	3800	3800
4.36	Internal turning radius	b ₁₃ (mm)	1320	1320	1370	1440	1440	1440	
Performance Data	5.1	Travel speed, laden / unladen	km/h	22,4/22,6	22,4/22,6	22,4/22,6	22,4/22,6	22,4/22,6	22,4/22,6
	5.2	Lift speed, laden / unladen	m/s	0,40/0,48	0,40/0,48	0,40/0,48	0,40/0,48	0,40/0,48	0,40/0,48
	5.3	Lowering speed, laden / unladen	m/s	0,60/0,48	0,60/0,36	0,60/0,36	0,60/0,36	0,60/0,36	0,60/0,36
	5.5	Drawbar pull, laden / unladen	N	45650/45650	45650/45650	45650/45650	45650/45650	45650/45650	45650/45650
	5.7	Gradeability, laden / unladen	%	27,5/30	27,5/31	26,5/30	23/27	20,2/23	17,6/20
	5.9	Acceleration time, laden / unladen over 15 metres	s	6,0/5,0	6,0/5,0	6,0/5,0	7,0/6,0	7,0/6,0	7,0/6,0
5.10	Service brake		hydraulic	hydraulic	hydraulic	hydraulic	hydraulic	hydraulic	
Combustion engine	7.1	Engine manufacturer / type		GM V8 5,7L	GM V8 5,7L	GM V8 5,7L	GM V8 5,7L	GM V8 5,7L	
	7.2	Engine power acc. to ISO 1585	kW	85	85	85	85	85	
	7.3	Rated speed	min ⁻¹	2200	2200	2200	2200	2200	
	7.4	No. of cylinders / displacement	anz/cm ³	8/5700	8/5700	8/5700	8/5700	8/5700	
	7.5	Fuel consumption acc. to VDI cycle	l/h	8	8,5	8,9	10,2	10,2	10,7
Others	8.1	Type of drive control		hydrodynamic	hydrodynamic	hydrodynamic	hydrodynamic	hydrodynamic	
	8.2	Operating pressure for attachments	bar	160	160	160	160	160	
	8.3	Oil volume for attachments	l/min	80	80	80	80	80	
	8.4	Sound level at the driver's ear according to DIN 12 053	dB (A)	71	71	71	71	71	

This specification sheet according to VDI regulation 2198 only provides technical values for the standard truck. Non-standard tyres, different masts, additional equipment, etc. could produce other values. Right reserved for technical changes and improvements.

Make use of the advantages

Ergonomic cabin

Comfortable, performance orientated ergonomics.

- Easy vehicle entry and exit; low step position, easily viewable from above.
- Operator cabin completely sealed from engine and suppressed against noise and vibration.
- Smoothly adjustable and mechanically cushioned comfort seat (air cushioning optional).
- Adjustable steering column.
- Hydraulic levers fixed to the operator seat (SOLO-PILOT) automatically follow all seat adjustments.
- Travel direction switch on the steering column (optionally available integrated into the MULTI-PILOT control lever).
- Abundant and comfortable leg room with combined brake/inch pedal.
- Excellent visibility through the mast due to the location of hydraulic cylinders hidden behind the mast profiles.
- Comfortable operation in all weather conditions with the comprehensively equipped standard cabin.
- Specially designed roof and cabin walls offering exceptional all-round visibility
- 180 degrees turning (left) seat (optional).

Powerful engines

The LPG industrial engines are specially designed for the required drive power in fork lift truck applications.

- TFG 660–690 and S80/S90: 8-cylinder engine (5.7-l-GM) producing 85 kW at 2200 U/min. Maximum Torque: 390 Nm at 1400 U/min.
- Powerful engine with electronic engine management at low rpm and high torque.
- Exhaust emissions below allowable emission values in accordance with ISO 8178.
- 90 litre fuel tank integrated into chassis.



Operator cabin

Resilient hydrodynamic drive

The hydrodynamic drive with electronically controlled 2 speed power shift transmission ensures an economic transmission of power. Other advantages:

- Precise and smooth power transmission.
- Automatic shift and electronically controlled shift lock at travel speeds of more than 4 km/h.
- Inch pedal (combined crawl-speed/ brake pedal) for precise travel during full lift capacity.
- Travel comfort packet (optional) with automatic increase in rpm during lifting, hydrostatic handling and large multifunction display. Especially suited for reversing and manoeuvring.

Service

Low service costs through good accessibility.

- Tilttable cabin – hinged at the rear and hydraulically operated.
- Simple access for daily maintenance (oil and water).
- Long service intervals of 500 hours.

Intelligent electronics

- Splash proof electronic drive and hydraulic controllers (in accordance with IP 64) connected via CAN-Bus.
- 12 Volt battery, 135 Ah/115 A alternator.
- Precise control of hydraulic functions using electromagnetic valves.

Precise steering

The maximum in steering comfort and highest safety through;

- Hydrostatic steering for extremely light and precise steering.
- Steering axle with integrated steer cylinder.

Brakes

Two independent brake systems on the front wheels.

- Foot brake – hydraulic servo; maintenance free, encapsulated oil laminate brakes with servo assistance.
- Parking brake: electro-hydraulic disk brakes operated via a button located on the display.

Reliable hydraulics

- Fine filtration in the fluid return circuit.
- 180 l hydraulic tank integrated into the chassis.
- Filtration of hydraulic tank ventilator.
- Pressure release valves protect against over pressurisation and overload.

Strong mast

- Slim mast profiles with lift cylinders hidden behind allow an extra wide field of view.
- Optimised visibility through the fork carriage.
- Fork carriage in accordance with FEM/ ISO-2328-4A.

Additional equipment

Many custom build options and various attachments are available in order to adapt the truck to suit customer requests or different applications.

良友貨架叉車有限公司
香港九龍荔枝角長沙灣道883號
億利工業中心11樓1103室

Mechanical And Transportation Equipment Ltd.
Unit 1103, 11/F Elite Industrial Centre,
883 Cheung Sha Wan Road, Lai Chi Kok
Kowloon, Hong Kong.

Tel : (852) 2744 3535
Fax : (852) 2744 3773
Email : info@matehk.com.hk
Website : https://www.matehk.com.hk



Jungheinrich trucks conform to the European Safety Requirements.

JUNGHEINRICH
Machines. Ideas. Solutions.