

Robust tow tractor
with sprung wheels for
indoor / outdoor use

Comfortable travel
for both indoor and
outdoor applications

High energy efficiency levels
due to maintenance-free
3-phase AC drive motor

Different cab versions



EZS 6250

Electric tow tractor (25,000 kg)

The Jungheinrich EZS 6250 is a versatile and economic tow tractor for towing trailers up to 25,000 kg. The ability to couple several trailers together allows loading characteristics to be varied and provides for the flexibility required in material-handling operations.

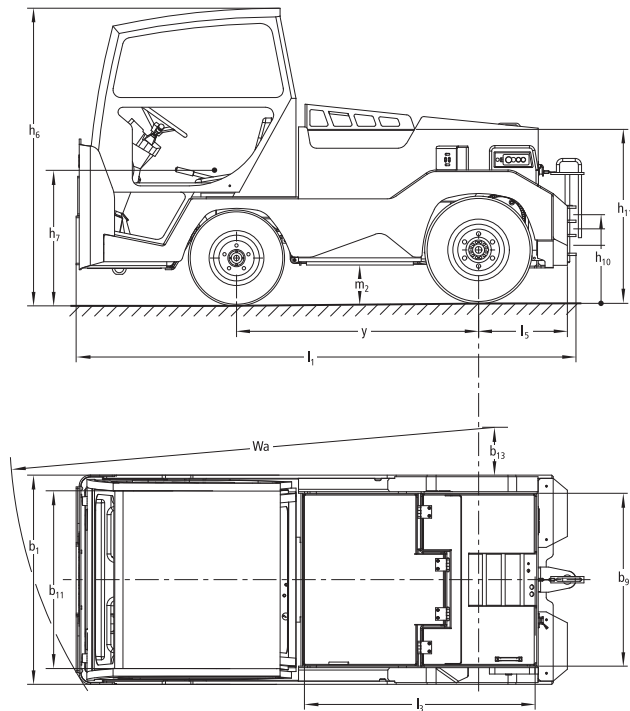
The coupling is visible from the operator's sitting position, and is easily accessible. The semi-automatic remote release (optional) allows the coupling and decoupling of trailers without the operator having to leave the vehicle, saving both time and money. Another of the vehicle's advantages is that the EZS 6250 is available with many different tow couplings to allow it to fit every trailer type.

High performance is ensured with the three-phase-technology drive motor. The advantages: quick acceleration and high top

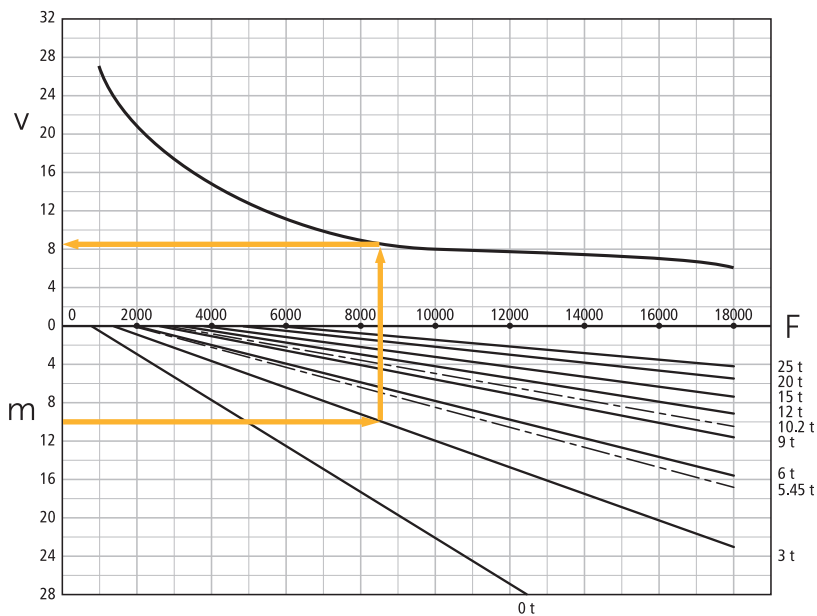
speed. At the same time, significant energy savings, longer operation time and minimum maintenance requirements are realised due to the omission of the carbon brushes. This performance is achieved through the optimal cohesion of drive motor and drive controller with the added benefit of regenerative braking.

Due to its very tight turning circle, the EZS effortlessly handles tight spaces with flying colours. The sprung wheels offer high travel comfort and safety even over uneven flooring. Other highlights include the variation of available cabin types, hydraulic steering and regenerative braking. The sprung loaded wheels offer both travel comfort and safety. The automatically activating parking brake reduces roll-back on slopes.

EZS 6250



Pulling ability



The reading example:

The EZS 6250 runs with 3 tonne load on a 10 continue upgrade %. This requires the EZS 8500 N tractive effort and is about 8,5 km/h reach.

Note:

For EZS 6250 over 5000 N no continuous operation possible.

Gradients / gradient greater than 4 % is the use of braked trailers recommended!

Technical data in line with VDI 2198

Identification	1.1	Manufacturer (abbreviation)		Jungheinrich
	1.2	Model		EZS 6250
	1.3	Drive		Electric
	1.4	Manual, pedestrian, stand-on, seated, order picker operation		seat
	1.5	Load capacity/rated load	Q t	25
	1.7	Rated tractive power	F N	5,000
Weights	1.9	Wheelbase	y mm	1,540
	2.1.1	Net weight incl. battery (see row 6.5)	kg	4,250
	2.3	Axle load without load front/rear	kg	1,925 / 2,325
Wheels / frame	3.1	Tyres		Lu, SE
	3.2	Tyre size, front	mm	6.50-10
	3.3	Tyre size, rear	mm	7.00-12
	3.5	Wheels, number front/rear (x = driven wheels)		2 / 2x
	3.6	Tread width, front	b ₁₀ mm	1,140
	3.7	Tread width, rear	b ₁₁ mm	1,140
Basic dimensions	4.7	Height of overhead guard	h ₆ mm	1,900
	4.8	Seat height/stand height	h ₇ mm	790
	4.12	Coupling height	h ₁₀ mm	375 ¹⁾
	4.16	Loading area length	l ₃ mm	1,400
	4.18	Loading area width	b ₉ mm	850
	4.19	Overall length	l ₁ mm	3,180
	4.21	Overall width	b ₁ /b ₂ mm	1,330
	4.32	Ground clearance, centre of wheelbase	m ₂ mm	150
Performance data	4.35	Turning radius	W _a mm	3,150
	4.36	Smallest pivot point distance	b ₁₃ mm	590
	5.1	Travel speed, laden/unladen	km/h	10 / 26
	5.5	Drawbar pull w. / w.o. load	N	5,000
	5.6	Max. drawbar pull, laden/unladen	N	18,000
Elec- trics	5.7	Gradeability laden/unladen	%	- / - ²⁾
	5.8	Max. gradeability, laden/unladen	%	- / - ²⁾
	5.10	Service brake		hydraulic
Misc.	6.1	Drive motor, output S2 60 min.	kW	23.0
	6.4	Battery voltage/nominal capacity K5	V/Ah	80 / 620
	6.5	Battery weight	kg	1,558
Misc.	8.1	Type of drive control		AC
	8.5	Trailer coupling, model/type DIN		Multi-stage coupling
	8.6	Steering		hydraulic

¹⁾ 375 / 480 / 570 mm

²⁾ See diagram

In accordance with VDI Guideline 2198 this specification sheet provides details of the standard truck only. Non-standard tyres, different masts, optional equipment, etc. may result in different values.

Benefit from the advantages



Different couplings available (optional)



Inching buttons for simple coupling and decoupling



Multi-stage coupling for different trailer coupling

Innovative 3-phase AC technology

Three-phase AC technology motors offer you more power and performance while, at the same time, reducing operating costs. Make the most of these advantages:

- High degree of efficiency with excellent energy management.
- Powerful acceleration.
- High top speed, even when laden.
- Rapid change in direction of travel
- No carbon brushes – maintenance-free drive motor.

Comfortable and safe operation

The truck's controls ensure comfortable and safe operation with adjustable options to suit every application:

- The speed set by the accelerator is automatically maintained under all travel conditions including on gradients / descents.
- Regenerative braking with energy recovery when slowing down.
- Safe starting and stopping, also on slopes with the electric parking brake (that automatically engages when stationary and automatically releases when starting).

- Adjustable steering column and seat for optimal sitting position.
- Hydraulic steering: Easy to operate, no kickback.

Optimal ergonomics

- Ergonomic controls for comfortable operation.
- Highly visible and accessible coupling from the driver's position.
- Fast, easy coupling / decoupling of trailers with semi-automatic remote unlocking from the operator position (optional).
- Various couplings available for different trailer types.
- Inching buttons for simple coupling and decoupling.
- CSE non marking tyres (optional).
- Many surfaces / compartments for operator materials, pens, papers, etc.

Robust construction for the hardest applications

- Frames from 8 mm high-quality sheet steel.
- Extra high chassis apron on the front bodywork.

Long operating times

Energy-saving 3-phase AC technology and high battery capacity ensure long operating times.

- Standard version: 80 V/620 Ah.
- Exchangeable with batteries from the Jungheinrich EFG 425 electric 4-wheel fork lift.

Fully informed at all times

Comprehensive display and setting instruments always allow a complete overview of system operations.

The operator display provides information about the battery discharge status, operating hours and fault codes.

Supplementary equipment.

An extensive array of supplementary equipment allows the individual adjustment of the vehicle to your application.

- Various couplings.
- Remote coupling release.
- Built-in battery charging socket mounted on the tow tractor.
- Different cabin equipment.

良友貨架叉車有限公司
香港九龍荔枝角長沙灣道883號
億利工業中心11樓1103室

Mechanical And Transportation Equipment Ltd.
Unit 1103, 11/F Elite Industrial Centre,
883 Cheung Sha Wan Road, Lai Chi Kok
Kowloon, Hong Kong.

Tel : (852) 2744 3535
Fax : (852) 2744 3773
Email : info@matehk.com.hk
Website : <https://www.matehk.com.hk>

The German production facilities in Norderstedt, Moosburg and Landsberg are certified. **ISO 9001**
ISO 14001

Jungheinrich fork lift trucks meet European safety requirements.



JUNGHEINRICH
Machines. Ideas. Solutions.