

Multi-pallet transport of up to three pallets

Ergonomic operator seat layout

180° / 360° steering

High travel speeds

3-phase AC technology (48 V) for high torques and dynamic movement



ESE 420/430

Electric sideway-seated pallet truck (2,000/3,000 kg)

The ESE 420/430 electric sideway seated pallet trucks are ideal for multi-pallet transport over long distances. Their 48-volt 3-phase AC motors ensure a smooth starts, powerful acceleration and high maximum speeds. The best basis for high throughput rates.

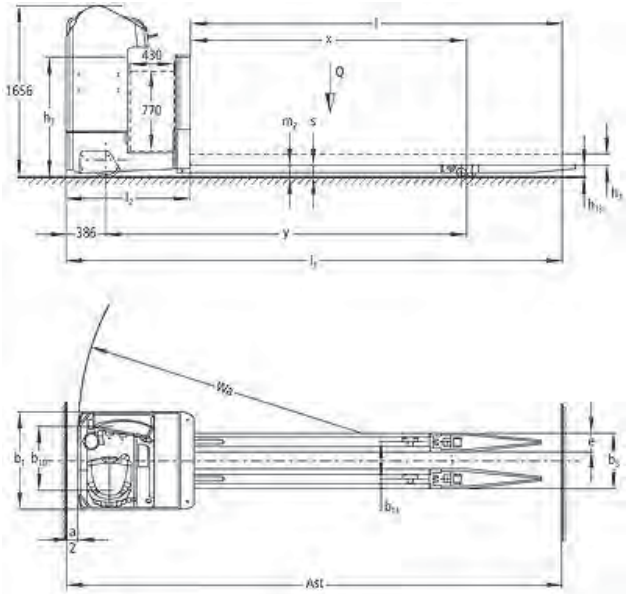
This high performance level is extremely easy to achieve and offers very high levels of safety: Travel speed, brakes and deadman switch are all controlled by

easily reached pedals. The lift functions are operated using the SOLO-PILOT control lever, which is readily to hand. The optional height-adjustable footplate and the adjustable steering wheel ensure comfortable seating positions for all operators. The steering can be switched between 180° and 360°. The 360° steering mode facilitates manoeuvring by allowing seamless changes of direction with only a few turns of the steering

wheel. The changeover between forwards and reverse can also be performed simply by pressing a button. The large display offers a quick overview of the steering setting, battery status and the available travel programs.

With battery capacities of up to 620 Ah and a robust design, the ESE 420/430 is the ideal truck for intensive applications.

ESE 420/430



Technical data in line with VDI 2198

			Jungheinrich					
			ESE 420	ESE 430				
Identification	1.1	Manufacturer (short form)						
	1.2	Model						
	1.3	Drive	Electrics					
	1.4	Manual, pedestrian, stand-on, seated, order picker operation	seat					
	1.5	Load capacity/rated load	Q	t	2	3		
	1.6	Load centre distance	c	mm	1200			
	1.8	Load distance	x	mm	1840 ³⁾	1480 ³⁾		
	1.9	Wheelbase	y	mm	2260 ³⁾	2211 ³⁾		
	Weights	2.1.1	Net weight incl. battery (see row 6.5)			kg	2395	2475
2.2		Axle load, w. load, front / rear			kg	2561 / 1900	2890 / 2980	
2.3		Axle load, w.o. load, front / rear			kg	1886 / 590	1916 / 559	
Wheels / chassis	3.1	Tyres			Vulkollan			
	3.2	Tyre size, at front			mm	Ø 343 x 114		
	3.3	Tyre size, at rear			mm	Ø 85 x 80	Ø 90 x 92	
	3.4	Additional wheels (dimensions)			mm	Ø 285 x 100		
	3.5	Wheels, number front/rear (x = driven wheels)			2-1x/4			
	3.6	Track width, front	b ₁₀	mm	604			
	3.7	Track width, rear	b ₁₁	mm	380			
Basic dimensions	4.2.1	Total height			h ₁₅	mm		
	4.4	Lift			h ₃	mm		
	4.8	Seat height/stand height			h ₇	mm		
	4.15	Lowered height			h ₁₃	mm		
	4.19.4	Total length including fork length			l ₁	mm		
	4.20	Length incl. back of forks			l ₂	mm		
	4.21	Total width			b ₁ /b ₂	mm		
	4.22	Fork dimensions			s/e/l	mm		
	4.25	Width over forks			b ₅	mm		
	4.32	Floor clearance centre wheelbase			m ₂	mm		
Performance data	5.1	Travel speed, w. / w.o. load			km/h			
	5.2	Lift speed, w. / w.o. load			m/s			
	5.3	Lower speed, w. / w.o. load			m/s			
	5.7	Gradeability laden/unladen			%			
	5.10	Service brake						
	Electrics	6.1	Drive motor rating S2 60 min.			kW		
		6.2	Lift motor rating at S3 15%			kW		
6.3		Battery according to DIN 43531/35/36 A,B,C, no			A			
6.4		Battery voltage/nominal capacity K5			V/Ah			
6.5		Battery weight			kg			
Misc.	8.1	Type of drive control			Mosfet / AC			

¹⁾ diagonal according to VDI: + 128 mm

²⁾ Diagonal travel according VDI: + 83 mm

³⁾ Load section lowered: + 89 mm

Benefit from the advantages



Controls



Comfortable seated position with generous



Safe entry with low step height and grab handle

Greater efficiency with three-phase AC technology

Powerful three-phase AC technology offers a whole range of advantages over conventional DC motors:

- Powerful acceleration.
- No carbon brushes – maintenance-free drive motor.
- Two-year warranty on the drive motor.

Ergonomic Drivers cab

The operator position provides ideal working conditions for relaxed, high productivity operations. Its strengths:

- Adjustable seat (seating position / body weight) for all drivers.
- Height-adjustable footplate (optional).
- Important controls within easy reach.
- Generous space.
- 180°/360° three-phase steering with optimised steering wheel position.
- Steering wheel adjustment.

Easy operation with SOLO-PILOT

The control lever for activating all hydraulic functions and also selecting the direction of travel and sounding the horn.

- All controls are within the operator's field of vision and are clearly allocated to a single function.
- Precise operation by sensitive activation of all functions.
- Comfortable armrest.

Easy-to-read driver's display

High quality control panel displaying the most important operating data.

- Travel direction and wheel position display.
- Steering setting.
- Battery status with residual time display.
- Speed.
- Distance covered.

- A choice of three travel programmes for individual matching to every operations.
- Operating hours and time of day.

Powerful battery

4 PzS 620 Ah

Robustly built for intensive applications

- Robust frame for continuous use at full rated load.
- Torsion-resistant forks manufactured with strong reinforced steel. Available in a wide variety of versions.

Reduced maintenance cost

Easy-service components ensure reduced long-term operating costs:

- Maintenance-free three-phase drive motor with no carbon brushes.
- Easy to service with outstanding accessibility to all components.

良友貨架叉車有限公司
香港九龍荔枝角長沙灣道883號
億利工業中心11樓1103室

Mechanical And Transportation Equipment Ltd.
Unit 1103, 11/F Elite Industrial Centre,
883 Cheung Sha Wan Road, Lai Chi Kok
Kowloon, Hong Kong.

Tel : (852) 2744 3535
Fax : (852) 2744 3773
Email : info@matehk.com.hk
Website : <https://www.matehk.com.hk>

The German production facilities in Norderstedt and Moosburg are certified. **ISO 9001**
ISO 14001

Jungheinrich fork lift trucks meet European safety requirements.



JUNGHEINRICH
Machines. Ideas. Solutions.